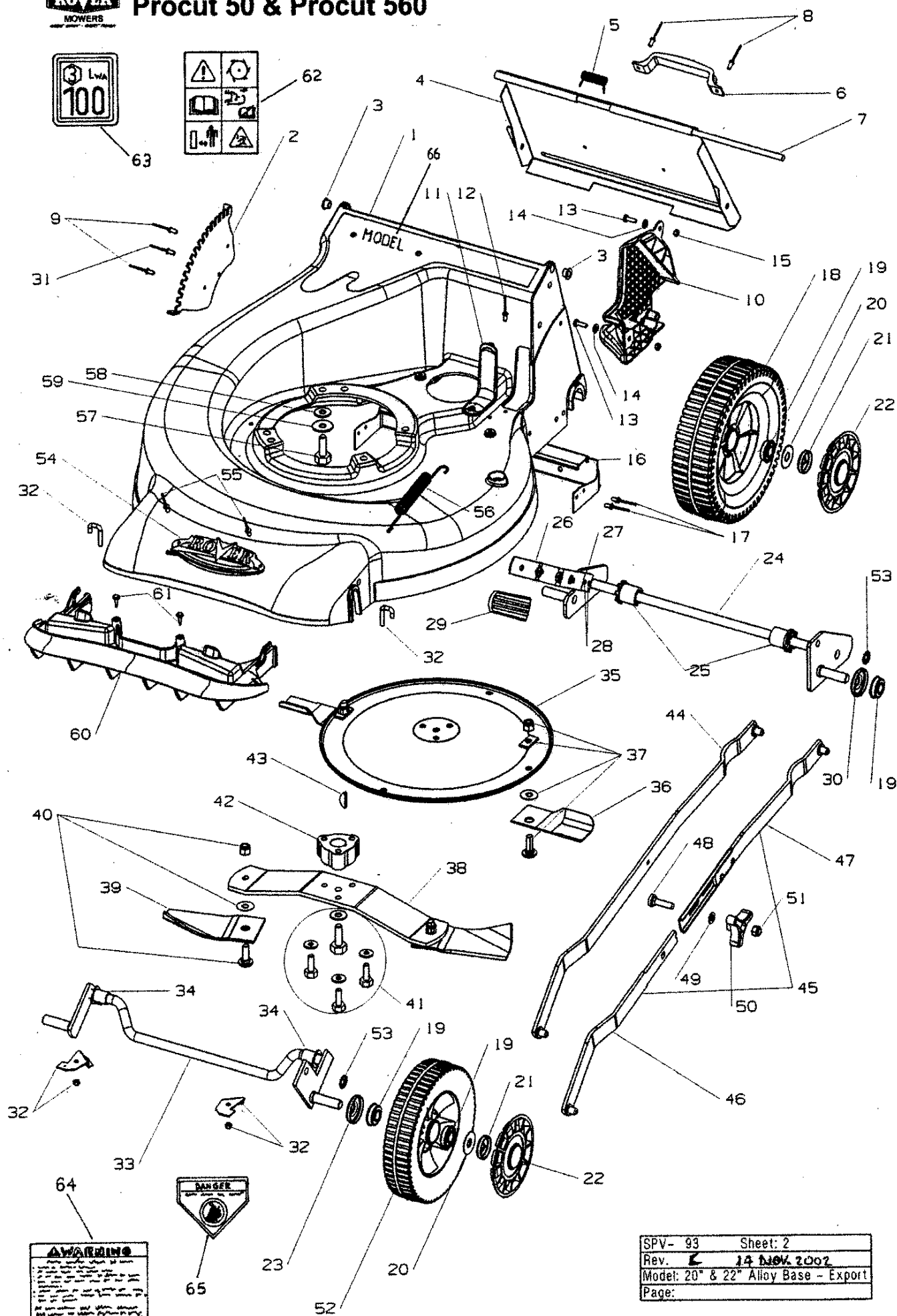





# Procut 50 & Procut 560

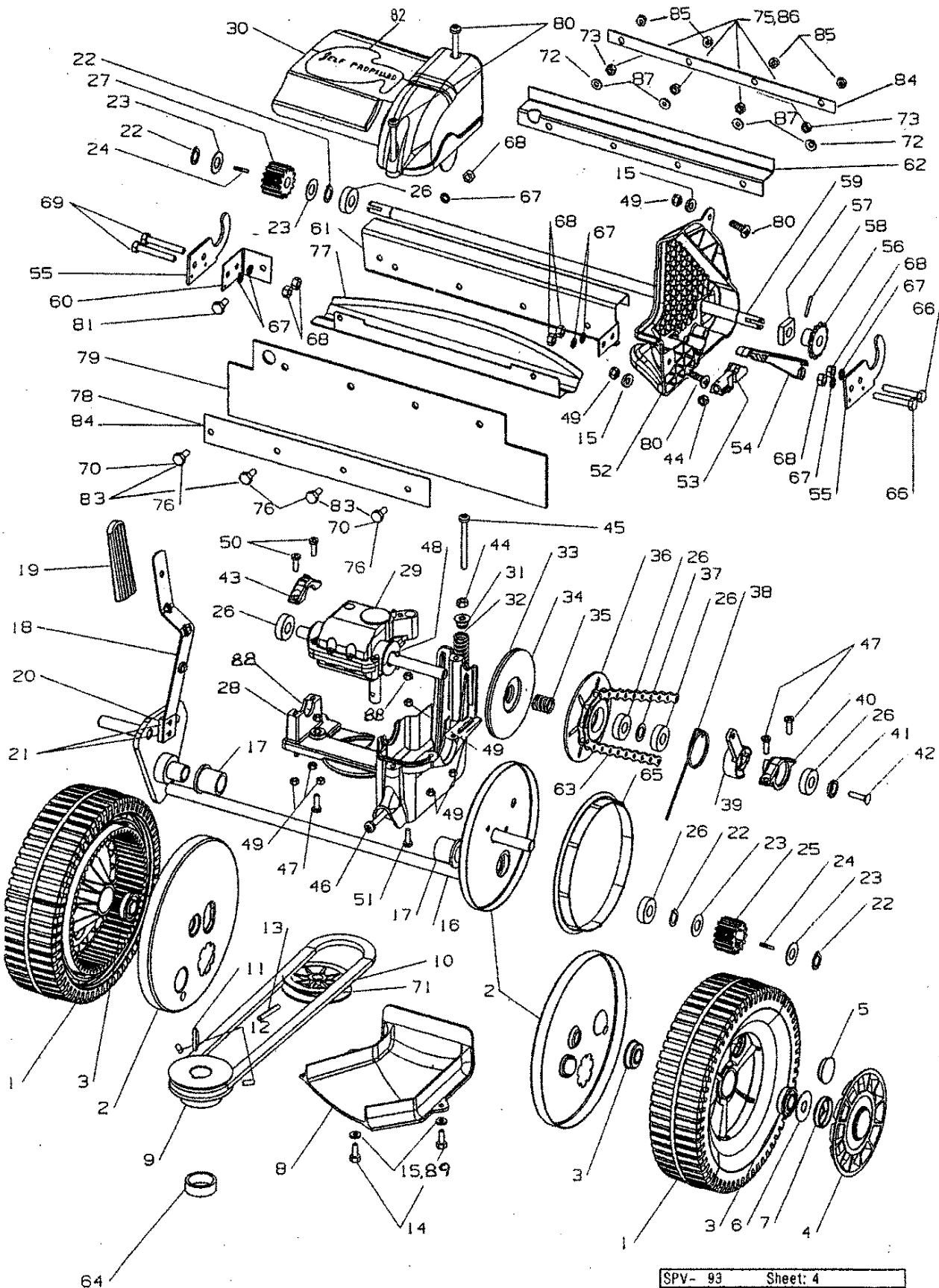


2

Rev.C		14-Nov-02					
SPV-93	20" & 22" Spare parts List						
Sheet 2	Export						
					<b>Procut 50 &amp; Procut 560</b>		
Item No	Part No:	Description	Qty	Item No:	Part No:	Description	Qty
1	A16135	Base- 20" Push	1	34	A03450	Front axle bush- 20" push & S/prop	2
1	A16070	Base- 20" Self propelled	1	34	A03674	Front axle bush- 22" S/prop	2
1	A16176	Base- 22" Self propelled	1	35	A16005	Disc- 20" push & s/prop. Only	1
2	A03510	Height adjustment rack- 20" only	1	36	A03830	Blade- standard 20" suit item 35	4
2	A16081	Height adjustment rack- 22" only	1	36	A03930	Blade- mulch 20" suits item 35	4
3	A03126	Flap bush	2	37	A00673K	Blade bolt, nut & washer kit- suits item 35	2
4	A03456	Rear flap	1	38	A03999	Bar blade holder- 20" only	1
5	A03325	Flap spring	1	38	A16173	Bar blade holder- 22" only	1
6	A03455	Handle- flap	1	39	A16108	Blade- 22" Export	2
7	A03306	Flap rod	1	39	A16238	Blade- 22" CE only	2
8	A290112	Rivet- flap handle	2	40	A04139K	Blade bolt, nut & washer kit- suits item 38	1
9	A04164	Rivet- rack	2	41	A0555K	Centre bolt kit	1
10	A16180	Chain case- dummy 20" push only	1	42	A01486	Disc boss	1
10	A16066	Chain case- 20" & 22" S/prop. only	1	43	A02051	Woodruff key	1
11	A16216	Infil piece- 20" push only	1	44	A10647	Conbar- standard 20" push & s/prop.	1
12	A04040	Rivet- 20" push only	1	44	A10644	Conbar- standard 22" s/prop.	1
13	A04158	Screw- M5 x 20	2	45	A10687	Conbar complete assy- 20" mulch	1
14	A04099	Washer	2	45	A10710	Conbar complete assy- 22" mulch	1
15	A04163	Nyloc nut- M5	2	45	A10715	Conbar complete assy- 20" China	1
16	A10381	Axle retainer- 20" CE push	1	46	A10684	Conbar front assy.- 20" mulch	1
16	A03877	Axle retainer- 20" US push	1	46	A10711	Conbar front assy.- 22" mulch	1
16	A03383	Axle retainer- 20 & 22" local&CE SP	1	47	A10686	Conbar rear assy.- 20" mulch	1
16	A03878	Axle retainer- 20" & 22" US SP	1	47	A10713	Conbar rear assy.- 22" mulch	1
17	A290112	Rivets- rear axle retainer- 20" push	4	47	A10708	Conbar rear assy.- 20" China	1
18	A10622	Rear wheel assembly- 20" push	2	48	A04117	Cuphead bolt	1
18	A10624	Rear wheel assembly- 20"s/prop.	2	49	A02030	Washer	1
18	A10669	Rear wheel assembly- 22"s/prop.	2	50	A03998	Handle	1
19	A03353	Wheel bearing	8	51	AO2223	Nut	1
20	A373109	Tension washer	4	52	A10621	Front wheel assy.- 20" push & s/prop.	2
21	A03092	Ratchet plate	4	52	A10622	Front wheel assy.- 22" s/prop.	2
22	A03414	Hub cap- chrome	4	53	A2501116	Ratchet plate	2
22	A16234	Hub cap- black	4	54	A03995	Logo	1
23	A16014	Wheel seal	2	55	A04171	Rivets- logo	2
24	A10649	Rear axle assembly- 20" push	1	56	A16076	Conbar spring- 20" push & s/prop.	1
24	A10639	Rear axle assembly- 20"self prop.	1	56	A16219	Conbar spring- 22" s/prop.	1
24	A10637	Rear axle assembly- 22"self prop.	1	57	A02127	Engine Bolt- B&S	3
25	A16220	Rear axle bush- 20" push	2	57	A02127	Engine Bolt- Honda GCV 160	3
25	A16294	Rear axle bush- 20"& 22" s/prop.	2	57	A04145	Engine Bolt- Honda GXV 140	3
26	A10284	Height adjustment lever- 20" only	1	58	A02012	Washer- Flat- Honda GXV 140	3
26	A10635	Height adjustment lever- 22" only	1	59	A02031	Washer- shakeproof Honda GXV140	3
27	A03336	Plate	1	60	A16137	Nose comb- 20"& 22" CE & US only	1
28	A02118	Rivets- height adj.lever	2	61	A04111	Screw- 20"& 22" CE & US only	2
29	A03250	Handle grip	1	62	A03743	Label- Warning CE only	1
30	A16014	Wheel seal- 20" push only	2	63	A03492	Label- Noise CE only	1
31	A04164	Rivet- rack 22" s/prop. Only	1	64	A03934	Label- Warning US only	1
32	A03516K	Axle hook kit	2	65	A03874	Label- Danger US only	1
33	A10140	Front axle assy- 20" push& S/prop	1	66	*	Label- Model	1
33	A10603	Front axle assy- 20" CE & US Mulch	1				
33	A10527	Front axle assy- 20" Prof.	1				
33	A10638	Front axle assy- 22" S/prop	1				
33	A10648	Front axle assy- 22" CE & US Mulch	1				
			</				



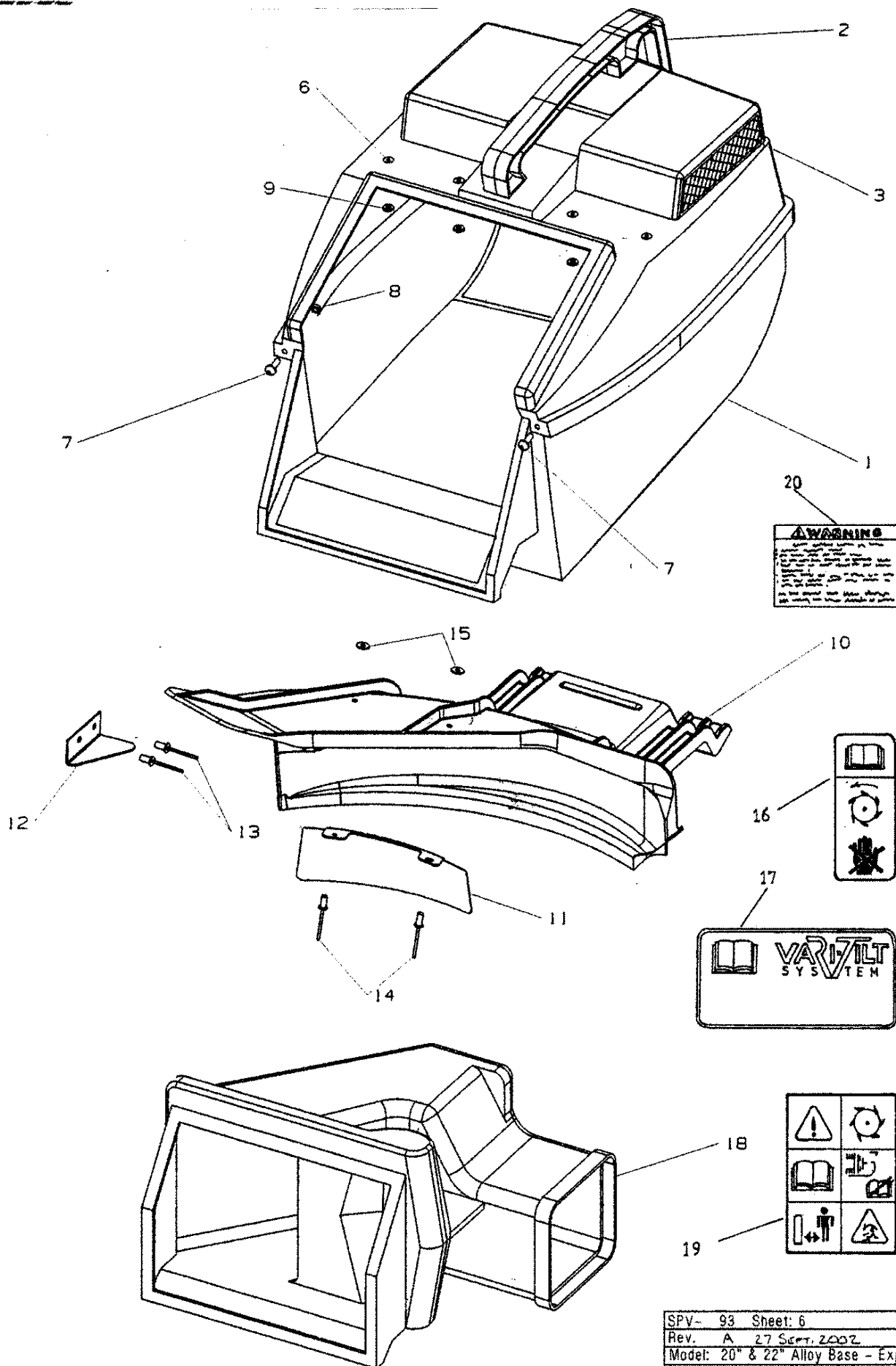
# Procut 50 & Procut 560








# Procut 50 & Procut 560

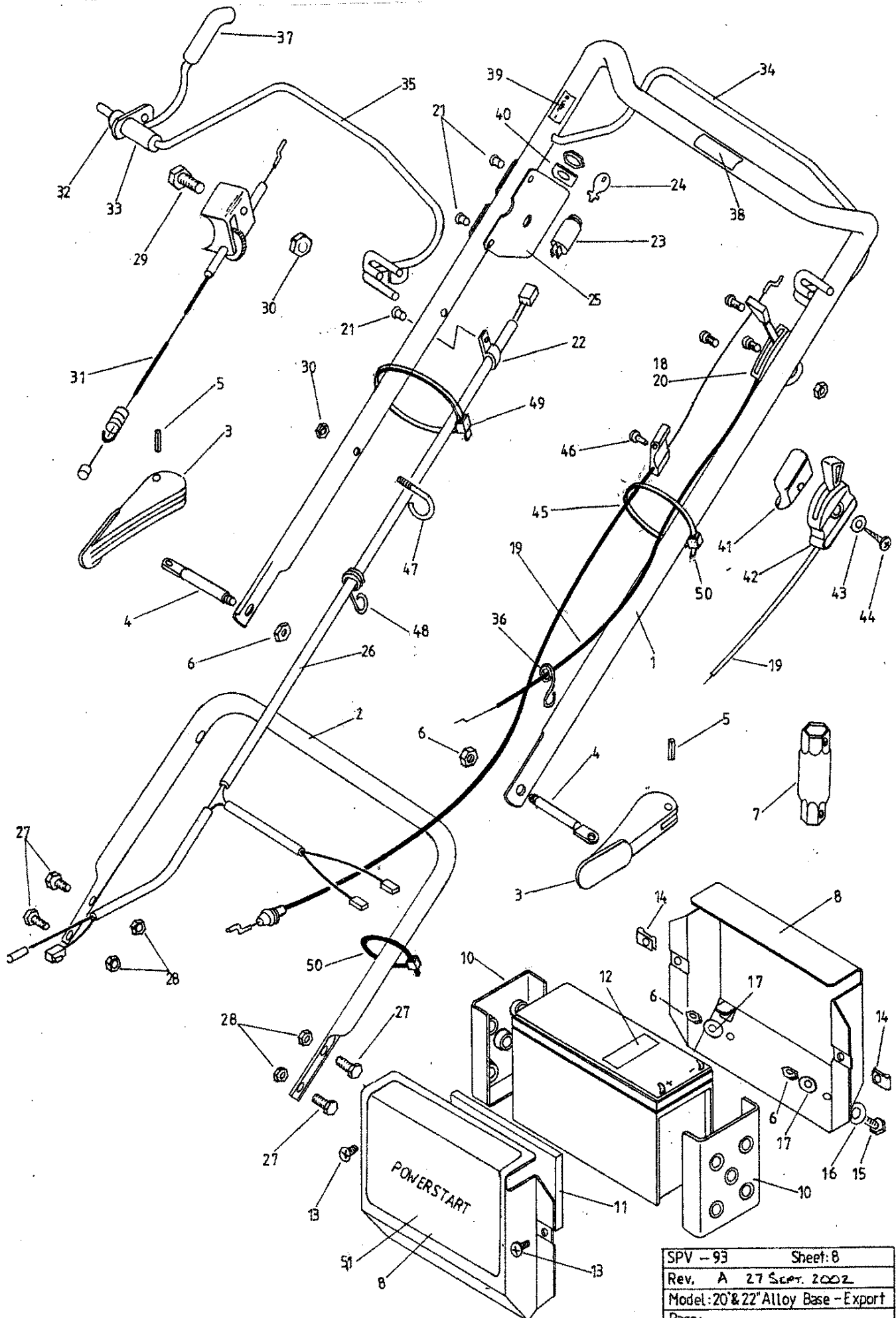


Rev. A	27-Sep-02	20" & 22" Alloy Base	 <b>Procut 50 &amp; Procut 560</b>
SPV-93		Export	
Sheet: 6			
Item No.	Part No.	Description	QTY
1	J10144	Grass catcher assembly	1
2	A03447	Handle	1
3	A03324	Mesh	1
4			
5			
6	A02175	Rivet-73 AS 5-5	4
7	A02163	Screw- 3/16" x 1/2"	2
8	A02050	Nut- 3/16"	2
9	A04083	Washer	4
10	A10689	Mulch Plug assembly 20"	1
10	A10714	Mulch Plug assembly 22"	1
11	A03901	Deflector	1
12	A03914	Support Bracket	1
13	A2901195	Rivet-73 AS 6-5	2
14	A02175	Rivet-73 AS 5-5	2
15	A02192	Washer- 5/32" x 7/16" flat	2
16	A03894	Label - Mulch Plug	1
17	A03928	Label - Vari-tilt	1
18	J10605	Side chute assembly c/w carton	1
19	A03743	Label - Chute	1
20	A03875	Label - Catcher - US	1

7



# Procut 50 & Procut 560



SPV - 93	Sheet: 8
Rev. A	27 Sep. 2002
Model: 20" & 22" Alloy Base - Export	
Page:	







## BOLETIN TECNICO

N· D 45

PRODUCTO: 508mm (20'') Y 560mm (22'') CORTACESPED AUTOPROPULSADO

Modelos      descripción

88041      cortacésped autopropulsado 56cm  
861942      cortacésped autopropulsado 50cm

Pieza      descripción      estado

A16080	muelle leva	anulado
A03358	muelle embrague	anulado
A16323	muelle leva	nuevo
A16322	muelle embrague	nuevo

Detalles: con el fin de mejorar la duración del sistema de tracción de los modelos de 508mm (20'') y 560mm (22'') autopropulsados, se han modificado el muelle de la leva y el muelle del embrague.

En el dibujo se muestra como se coloca el nuevo muelle leva y se fija en la caja. En el caso de tener que cambiar el antiguo muelle leva (A16080) hay que sustituirlo por el nuevo muelle (A16323) y cambiar el tornillo de 5X30 actual por el nuevo de 5X40 (A04163) y la tuerca para fijar el extremo del muelle (A04163)

